

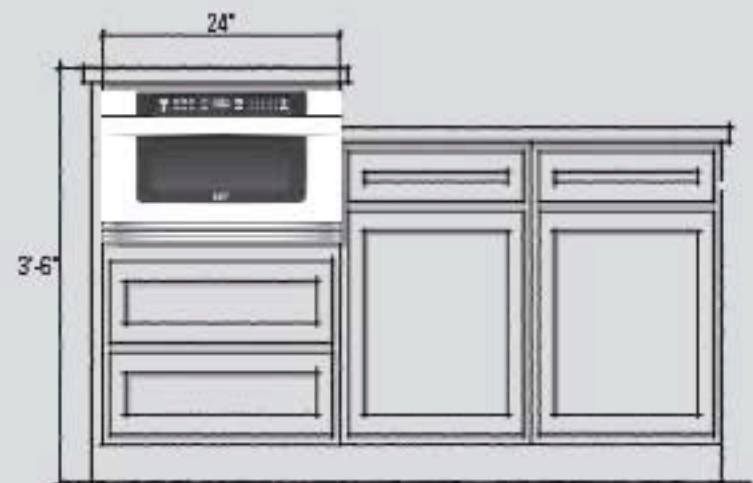
Always check the Installation Instructions for the specific model you are using. This Microwave Drawer can be installed below any electric or gas wall oven.

* Can also be installed using an electrical outlet in an adjacent cabinet. Always check electrical codes for requirements.

IDEAS



The trend is toward using freestanding furniture in the kitchen that includes built-in appliances. Why not design a piece of furniture with a 24" built-in Sharp Microwave Drawer in your next project?



Manufacturers now offer many optional arrangements. Raised cabinets that elevate appliances for easy access are becoming more common. A built-in Microwave Drawer in one of these raised cabinets creates an ideal functional work area.